



St. Louis Master Gardener

Garden Talk

Volume 8

August 7, 2019

INSIDE THIS ISSUE:

New Projects	2
2019 Trainees	3
Disease/Pests	4
State Fruit Tree	5
MISC	6
Events/Classes	7
Event Flyers	10

Upcoming events:

- Aug 14 - Class at Extension
- Aug 17 - Cultivating Young Cooks
- Sept 17 — Winery & Tree Farm Tour
- Sept 28 — Makers Market

2019 St. Louis Master Gardener Garden Tour

The 2019 MG Garden Tour was delayed one week due to rain and the tour was worth the wait. Six unique gardens, all located in the St. Louis County area, were included and over 164 attended.



**St. Louis
Master
Gardener**



Find us on
Facebook

Creating Flower Beds in the Community by MG Ann Niemann



One of the best things about being a Master Gardener are the opportunities the Master Garden Program provides to give back to the community. The flower beds at the Kirkwood YMCA and West County Care Facility are two such examples.

The Kirkwood YMCA is located on a very prominent intersection. Many visitors and residents pass this intersection every day. After walking/driving by this intersection many times, I got tired of seeing the disarray of the flower bed in front of the YMCA signage. The bed at the time contained 2 dead annuals, lots of weeds, and 1 salvia. I came up with a plan to redo the bed and talked with the YMCA manager. She enthusiastically signed on to my plan. With money donation from the Y and discount on plants from Sugar Creek Nursery, the bed was replanted. It now includes native plants such as Rattle Snake Master and Poppy Mallow. Several other favorites were included to add color; cornflowers, asters,

and lantana. When maintaining the bed, people will come up to me and ask questions. They are especially interested in the Rattle Snake Master and native plants. One person shared with me that she has a new understanding of "native" plants. Previously, she thought natives were all weeds.

I became involved with the West County Care Center through the MOBOT horticulture therapy program. The West County Care Center is a skilled nursing facility. While visiting the center with the horticulture therapy program, several residents were telling me about how they miss seeing butterflies. One woman even started crying as she was telling me this. This touched me. So I volunteered to create a butterfly garden along the entrance to their facility. When planting the new plants, the facility administrator called out to me to talk about plants. He never heard of butterfly weeds, lantana, or poppy mallow. When I came back the following week to monitor the flower bed, they had mulched the beds and add several hanging plants.

New Garden Projects

Ubuntu Center for Peace Garden

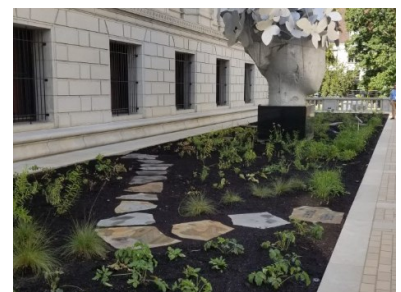
The Ubuntu Center for Peace, located within the Orr-Weathers housing complex in East St. Louis, is an oasis of peace and kindness, in an often violent community. With a focus on justice and peace, the Ubuntu Center is home to Join Hands. "It is home to our programs, a second home for our families, and a community center for the neighborhood. We bring light, love, and hope to all who come through our doors," said Director Sheila Burton.

The garden consists of raised beds, grow bags, and grow soxxs by Greenwall Ventures. MGs Beverly Dyson and Lynne Seacord helped plant the beds and install the drip irrigation. Mg Kerry Brethauer helped install the garden and makes weekly visits to check on the plants. I am trying hard not to kill everything—Holly R.



Pollinator Garden at St. Louis City Library

The Pollinator Garden was installed in Fall 2018 and features 27 native plant species that are set to bloom throughout the year. MGs Mary Deschene and Susan Kennedy have been working to keep the native plants looking their best so that the general public will see that a native garden can have a more controlled and formal appearance.



2019 Master Gardener Class



52 Master Gardener trainees successfully completed the 2019 Master Gardener training. One-third of the class has completed their volunteer and ce requirements with the remaining two-thirds not far behind.



Sandra Mc Coy, center, is the volunteer in charge of the Emerson YMCA garden in Ferguson. Sandra is visually impaired and she has provided insight into ways



the Master Gardener training can be more accessible to the visually impaired. She is also the grandmother of twin boys born during the mg training.

Sandra plans to introduce the boys to gardening at a very early age. She has completed her volunteer and ce hours so she is officially a St. Louis Master Gardener.

Sherry Harsch-Porter, Patti Barnes, Cindy Geiss & Susan Rowe all sat in row two in the evening 2019 training class. This group of mg trainees can be found volunteering all over the City and County. This crew could conquer any task they put their minds to. The picture was taken at Compton Hill Water Tower Park.

Martha Kratzer is the niece of Master Gardener Alma Reitz who passed away this year at the age of 102. Alma was the inspiration for Martha to become a Master Gardener. Martha has been a Garden volunteer for years. She has completed her volunteer and ce hours so she is officially a St. Louis Master Gardener.



Kiersten Torrez

volunteers with Northside Workshop a nonprofit organization dedicated to addressing cultural and community issues in North Saint Louis. NSW hosts multi-generational workshops focused on beekeeping, gardening, cooking and the arts to encourage a healthy urban ecosystem for all. Kiersten has completed her volunteer and ce hours so she is officially a St. Louis Master Gardener.



Disease & Pest Update

JEFFERSON CITY, Mo. - The Missouri Department of Agriculture, in coordination with USDA Animal and Plant Inspection Service, has detected **ramorum blight** on rhododendron plants shipped to some retail nurseries in Missouri. The disease is commonly known as Sudden Oak Death when it infects oak trees. The rhododendrons were shipped to Wal-Mart and Rural King stores throughout Missouri, as well as the Springfield Home Depot, Stark Bros. Nursery Garden Center and Fort Leonard Wood PX.

Consumers who purchased rhododendrons or lilac plants of the known infected varieties labeled Park Hill Plants from these stores between March and June of this year should dispose of the plants immediately. Consumers who are unsure of their plant's variety should look for wilting or browning leaves, leaf spots and twig dieback. If consumers notice these symptoms, they should contact the Department's Plant Pest Control team at (573) 751-5505 and begin the disposal process.

Varieties that have been infected should be disposed of immediately to prevent further spread of the disease. Plants may be destroyed by burning, deep burial or by double-bagging the plant with its root ball in heavy duty trash bags for disposal into a sanitary landfill (where allowable). Consumers should not mulch, compost or dispose of the plant material in municipal yard waste. Garden tools used to dig up any affected plants should also be sanitized before they are used again.

Sudden Oak Death is a form of ramorum blight and is caused by a fungus-like pathogen known as *Phytophthora ramorum*. Since the 1990s, the plant disease has caused mortality in some types of oak trees in California and Oregon, but it has not established itself in the Midwest.

Fall Web Worms

Fall webworms (*Hyphantria cunea*) are communal caterpillars that spin silk into a tent-like structure at the tip of branches. These webs are often built around leaves they feed on. Fall webworms feed on a wide range of deciduous trees and shrubs including, but not limited to, crabapple, red-bud, sweet gum, maple and oak. As the caterpillars consume the leaves within the web, they will expand the web every week or so to include more leaves. Adults emerge late spring to midsummer and begin to deposit hairy egg masses on the underside of leaves. A few days later, the larvae hatch and begin to build silken webs over the ends of branches. You may begin to see their tent-like webs when *Hydrangea paniculata* Grandiflora (PeeGee Hydrangea) is blooming.

Since fall webworms are unlikely to cause enough damage to harm the plant, some aesthetic damage may be tolerated and treatment may not be required. Pruning back branches to remove the web is a mechanical control method that can be implemented at any time and can be effective in reducing caterpillar populations quickly.



Fall webworm tent-like webs on



visible larvae (Travis Cleveland)

Billbugs

Adult billbugs are small weevils, about 3/8 of an inch long, and brown or black in coloration. They are easily differentiated from white grubs because they are leg-less and much smaller, measuring up to 1/2 an inch. Their inability to fly prevents billbugs from traveling as far as some other pest species and means that billbug injury usually does not spread to cover large areas.

Billbug larvae are easily differentiated from white grubs because they are leg-less and much smaller, measuring up to 1/2 an inch.



by David Shetlar, The Ohio State U Bugwood.org. 548621

Adult billbugs usually do not cause noticeable injury to turfgrass but the larvae can cause significant feeding damage. Billbug injury can be identified by browning, straw-like turf in two to three inch round patches. To differentiate billbug injury from that of other insects, you can use the "tug test." If the injured turf is pulled, it will break away easily.

While there are chemical controls available, many affect pollinators so you might want to choose a non-chemical control such as nematodes. Nematodes will provide about 60% control while chemical controls may provide 95% control.

Be on the Lookout

Most people have heard of the emerald ash borer, an invasive wood-boring insect that was originally brought to Missouri in ash firewood. Unfortunately, this isn't the only tree killer that can hitch a ride with humans. New pests are introduced to the U.S. every year through global trade. Once established in the local environment, these pests are easily moved long distances by people. Read on to learn more about three pests that are currently threatening our trees. Don't be the one to accidentally bring these bad bugs to your neighborhood!

ASIAN LONGHORNED BEETLE

- Travels in firewood and pallets
- Bores into many common yard trees — prefers maples

LOOK FOR LARGE ROUND HOLES IN TREE BARK

GYPSY MOTH

- Travels on vehicles and outdoor gear
- Strips leaves from oaks and many other trees

LOOK FOR TAN, FUZZY EGG MASSES

SPOTTED LANTERNFLY

- Travels on any smooth surface, from landscaping stone to patio furniture
- Sucks sap from many trees and plants
- Look for large spotted insects, often in groups

Report sightings of these insects

to Forest.Health@mdc.mo.gov (link sends e-mail).

WHAT'S KILLING MY TREE? Robbie Doerhoff and Natalie Diesel

Powdery Mildew

This summer fungal diseases have found the perfect growing conditions in St. Louis. Powdery mildew is a common fungal disease that affects many annuals, perennials, shrubs, and trees. It thrives in warm humid weather.

Symptoms include white or dusty gray patches on the leaves, shoots, buds, flowers or stems. In many cases the damage is superficial, but in other cases the leaves can become distorted, dwarfed or discolored. New growth is more sensitive than older leaves.

Powdery mildew is not fatal but if it comes back continually, the plant becomes stressed and weakened. Prune out diseased tissue and destroy it. Gather and destroy dead leaves and stems in the fall. This is the source of next season's inoculum.

To help prevent—keep plants in good vigor. Space the plants for good air circulation. Give the plants plenty of sun, as too much shade seems to make the problem worse. Try to avoid overhead watering and do not handle the plant when the foliage is wet as this will spread the disease. Water early in the day.



Missouri's New State Fruit Tree

Jefferson City, MO (July 12, 2019)—A Missouri native tree with ties to the tropics has been designated as the state fruit tree of Missouri. Senate Bill 210, signed by Governor Mike Parson yesterday, July 11, 2019, was sponsored by Senator Karla May of St. Louis. The legislation designates the pawpaw as the state fruit. "Two years ago, during the election, our students voted on a possible new symbol for Missouri," said Mr. Alexis Wright, head of the New City School, an independent elementary school in St. Louis. "The students felt that the pawpaw had a lot of potential to become a new Missouri state fruit tree because it is native to our state, high in nutrients, and its fruits ripen in August, the same month Missouri was founded. Senator Karla May, sponsored the bill."



Test your ID skills!



Taken by Master Gardener Ann Lakin



Taken by Master Gardener Marjorie Putnam



Interesting & Possibly Encouraging

What happens to landfills when it stops being a landfill?

According to arborist and author, **William Bryant Logan**, the Long Island Fresh Kills Landfill grew into a hideous forest that is a mix of natives and invasives. The forest is filled with trees or vines that like to live in what ecologist call "disturbed landscapes." Lots of poison ivy and other invasive vines that are fighting to overtop trees. The roots of the fallen trees are often intertwined with plastic bottles and other trash. The interesting thing is that new trees sprout from the fallen trees. *"The forest does not know this. It does not think. It just acts. Because it is so*



Photographs by [Damon Winter](#)



Garlic mustard and poison ivy growing up around an abandoned car seat.

Photographs by [Damon Winter](#)

good at sprouting, resprouting, reiterating, and repeating the entire process, it can keep up the living and dying for as long as it takes, even if that is a thousand years. The trees are not conscious. They are something better. They are present. The insistence of wild growth at Fresh Kills Landfill should make us rethink nature," wrote Logan.

By the time the landfill was closed in 2001, over 150 millions tons of NYC garbage had been dumped there. (Taken from the July 20th NY Times

More Upcoming Events

- **Wednesday, August 14** —Problems Common to Perennials & Annuals given by MG Carol Gravens. \$10 at MU Extension in Kirkwood. See page 10 for more information.
- **Tuesday, August 26** - The Ferguson MG Speakers Series with Dan Billman. Details will be provided in my weekly email. This event is held at the Ferguson Brewery. Food, drink and a great CE opportunity. See you there!
- **September, 12, 19 & 26** - Tree ID taught by MG Maggie Jackson at the Missouri Botanical Garden. You don't want to miss this educational opportunity! Register at <https://tinyurl.com/y2o58c33>
- **Wednesday, September 18** - Another 7-week session of the Hort Answer Service Training beginning September. Seven classes taught by Glenn Kopp, Ronda Anson, and Justin Keay and there is a volunteer commitment. No class on October 2nd. Register at <https://tinyurl.com/y33q8zla>
- **Saturday, September 21**—Trees, Vineyards, Brats & Wine Bus Tour details page 12.
- **Saturday, September 27** - St. Louis Master Gardener Maker's Market. Details page 13. 13 for more information.

Extension Hort Answer Service

**MONDAY AND WEDNESDAY
12:00 TO 3:00 P.M.**

- Please stop by, or call 314-400-7657 to speak to a Master Gardener during those times.
- You mail also email stlgardenhotline@gmail.com at any time with your plant questions. You will receive a response in a timely fashion.

If you have questions about commercial horticulture, or soil test interpretations feel free to contact our Horticulturist, Justin Keay at 314-400-7388 or justin.keay@missouri.edu.

Hours Reporting

To remain an active St. Louis Master Gardener, master gardeners must log 40 volunteer and 10 continuing education hours yearly. All hours must be recorded on www.stlmg.org even if you log your hours at your volunteer site. If you can't remember if you logged your hours then just click VIEW Hours on www.stlmg.org under Member Corner. If numbers are missing or you need help just send Holly Records an email at recordsh@missouri.edu. Volunteer hours are an important way to determine the chapter's effectiveness so please log your hours.



University of Missouri Extension
132 E. Monroe Avenue
Kirkwood, MO 63122
314-400-2115

St. Louis Master Gardeners
Missouri Botanical Garden
4344 Shaw Blvd.
St. Louis, MO 63110

LOG YOUR HOURS!



www.stlmg.com



Visit [Missouri Environment & Garden](#) newsletter MEG.



Lorrie Otto, the inspiration for Wild Ones was born on September 9, 1919.

MG Merchandise

Is your Master Gardener tee shirt a little ragged? Would you love a fleece or sweatshirt to wear in the ever changing St. Louis weather? Maybe you need a moisture wicking shirt so you are comfortable and looking good when it is 95 degrees. Whatever your reasons, visit [MG Merchandise](#) on www.stlmg.com and begin shopping for new MG apparel. Contact Margaret Lahrman with any questions at mlahrman@sbcglobal.net



Online Learning

- [ASHS American Society for Horticulture Science's](#) Certified Horticulturist Examination Study Guide available for \$55
- BBC online learning, support & advice <http://www.bbc.co.uk/learning/subjects/gardening.shtml>
- [NC State University Department of Horticultural Science](#) is partnering with [Longwood Gardens](#) to provide a fully-online introduction to plant identification. These courses will introduce you to the language of botany, plants with global popularity, a few special plants from breeding programs at top horticulture institutions, and cultivation information for key plant species. These courses are more expensive at about \$195 each.
- [National Garden Club](#)—several courses to choose from and most of the online courses are only \$10.
- [Oregon State University Online Short Courses](#) - Excerpted from OSU's Master Gardener Online course, the Master Gardener Short Course Series allows students to study specific fundamentals of gardening. The various subject areas of the OSU Master Gardener curriculum encourage participants to learn the art and science of growing and caring for their own plants. \$45

St. Louis Master Gardener Advisory Committee



DIANE GRUBBS



DURINDA MULLINS



JAN GOWEN



SUSAN HACKNEY



TERRY MILNE



LINDA MONDAY



ANN NIEMANN



ANNE RANKIN-HORTON



MARSHA HOBBS SMITH

Event flyers next 5 pages

PROBLEMS COMMON to Perennials & Annuals

Are you trying to get your home garden to look like it belongs in the Better Homes and Gardens magazine? You can do all the right things and still have insects and plant diseases challenging you. This class will teach you about common garden pests and diseases, as well as how to manage them with safe and sustainable tactics.



Carol Gravens retired from a professional career as a microbiologist and is an Advanced Level St. Louis Master Gardener. She became a Master Naturalist in 2007, and she has an AAS in Horticulture from St. Louis Community College at Meramec.

Where: Mu Extension, 132 E. Monroe Avenue 63122

Date: Wednesday, August 14th

Time: 6:30 to 8:00 p.m.

What: Bring your plant problem samples

Cost: \$10.00

To register: Visit <https://tinyurl.com/yyqcfjks>



Fabulous Event for the Entire Family

Cultivating YOUNG COOKS

at the missouri botanical garden

Saturday, August 17
9 a.m. to 3 p.m.
Kemper Center for
Home Gardening

Included with Garden admission



touch a worm • taste a mushroom
• milk a goat • eat a bug •
live cooking demos • create nature art

Drop in for an hour or stay for the day and explore the fun, fascinating, and healthy aspects of food. Discover the resources and information needed to foster the development of young cooks, gardeners, and healthy eaters.

Several organizations and award-winning local chefs will share information and give hands-on demonstrations on a wide range of topics from healthy home cooking, beekeeping, vermiculture, goat milking, cheese making, and much more.



4344 Shaw Blvd., St. Louis, MO 63110
(314) 577-5100 | mobot.org

Trees, Vineyards, Brats & Wine Bus Tour

SATURDAY, SEPTEMBER 21, 2019

8:30 a.m. sharp: Group leaves Extension Office at 132 East Monroe, Kirkwood. Our guide for the day is Linda Koenig, a fellow St. Louis Master Gardener, and regional tour operator/guide. Linda will regale us along the way with stories about the Missouri Wine Industry, Mid-Mississippi Valley German settlement, and Hermann history.

10:00 a.m. to 12:00 p.m.: Begin VIP "Grapes to Glasses" tour. Since we are touring right in the middle of the 2019 harvest, we will be treated to behind the scenes areas that are normally off limits to the general public. Expert winemaker Dave will take us into the vineyards to explain and answer questions about wine-grape growing and Stone Hill's history, and he'll also take us into the press house, tank building, and Stone Hill's famous 1800's cellars. Along the way, we will taste various wines from the barrels and tanks, paired with snacks. Our personal wine glass will be ours to take home. We'll have a few minutes for purchases at the winery at the end of the tour.



12:15 to 1:15 p.m.: Enjoy a delicious bratwurst tasting and German lunch at the Hermann Wursthau. We'll have an award-winning brat on a bun with kraut and mustard, German potato salad, peach pecan bread pudding, and a beverage.

1:45 to 3:15 p.m.: Visit the well-known Pea Ridge Forest, one of the largest tree farms in the state of Missouri. Started as a Christmas Tree Farm in 1955, the farm now has diversified into a diverse selection of evergreen and deciduous trees, which are sold to landscape companies and garden centers. Owner Mike Rood will drive us through the farm in his big wagon, explaining all about growing and caring for trees in Missouri.

4:30 p.m.: Arrive back at the Extension Office in Kirkwood.

Tour includes transportation, lunch, gratuities, Stone Hill and Pea Ridge tour costs, and the services of Linda Koenig. Cost based on 25 participants is \$93 per person. Register at <https://tinyurl.com/y3fqpbtc> or contact Holly Records ordsh@missouri.edu for more information.



PEA RIDGE FOREST

Christmas Tree Farm and Wholesale Nursery



St. Louis Master Gardener

Makers Market

SHOP * EAT * GATHER



Shop a selection of
handmade goods
from a unique mix
of local makers,
creators and
artists.

Four Seasons Clubhouse
615 Broadmoor Drive 63017
Woodsmill Rd. & Olive St.
Chesterfield 63017

SAT. Sept 28
10AM - 3PM

Contact Veronica Putz veronicaputz@charter.net with questions.

Proceeds from this event will benefit the Cultivating Young Cooks event and the St. Louis Master Gardeners. Interested in being a vendor please contact MG Veronica Putz at veronicaputz@charter.net.



Sustainable Garden & Kitchen Seminar



ARE YOU AN URBAN HOMESTEADER LOOKING FOR MORE WAYS TO ENHANCE YOUR LIFE?

**A days worth of
learning, a lifetime
worth of knowledge**

October 5

9:00 am to 4:00 pm

Elliot Chapel
100 S. Taylor Ave.
Kirkwood, MO 63122

\$75.00/ per person
Includes lunch

This conference provides practical research-based education, information and demonstration on living a sustainable lifestyle in an urban setting.

Opening session	Edible Landscaping, Keynote presented by – Matt Lebon		
Choose (1) one class for each session			
Session 1 10:00 - 11:30	Vermi-Composting	Pollinator Garden	Fermentation
11:30 - 12:15	Lunch Break		
Session 2 12:15 - 1:30	Understanding your Soil for Garden & Lawn Success	Ins & Outs of Incorporating the Natives	Recipes for Success, Preserving Salsa's, Pickles and Jams
Session 3 1:45 - 3:00	Keep It Safe! Pest Control for the Home Garden	Brewing 101	Basics of Home Canning – Methods and Safety
3:30 - 4:00	Closing Q & A and Evaluations		

Register at: extension.missouri.edu/stlouis/classes.aspx

M Extension
University of Missouri

**WE BRING
EDUCATION
TO YOU**

an equal opportunity/ADA institution

314-400-2115